

Contact details:

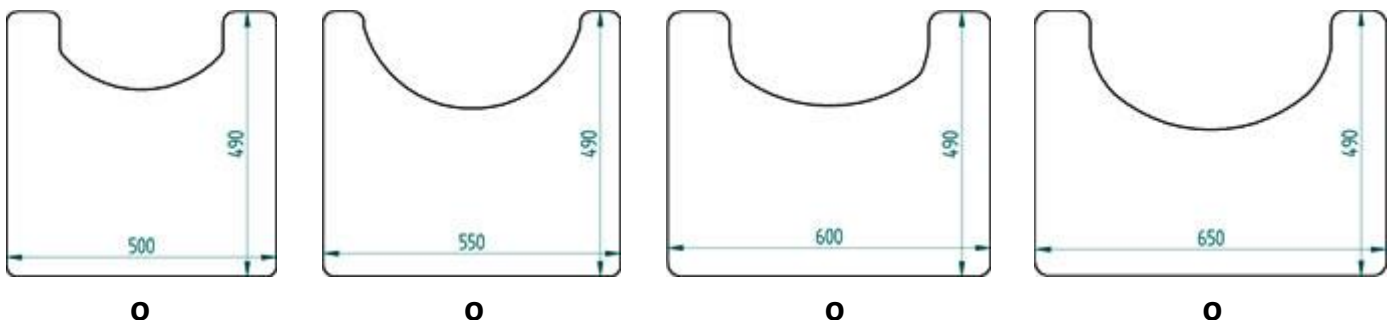
Company: _____ Date: _____
Address: _____ Order number: _____
Zip code: _____ Contact: _____
City: _____ Telephone: _____
Country: _____ E-mail: _____

Form table for wheelchair

Standard flat table

(please mark drawing below)

- Acrylate (perspex / plexiglass) 8 mm thick
- Acrylate (perspex / plexiglass) 10 mm thick
- Polycarbonate (makrolon-lexan) 8 mm thick (unbreakable)
- Polycarbonate (makrolon-lexan) 10 mm thick (unbreakable)



Standard wheelchair tray (490x300 mm)

- o Acrylate (perspex / plexiglass) 8 mm thick
- o Acrylate (perspex / plexiglass) 10 mm thick
- o Polycarbonate (makrolon-lexan) 8 mm thick (unbreakable)
- o Polycarbonate (makrolon-lexan) 10 mm thick (unbreakable)



Standard table with bended sides

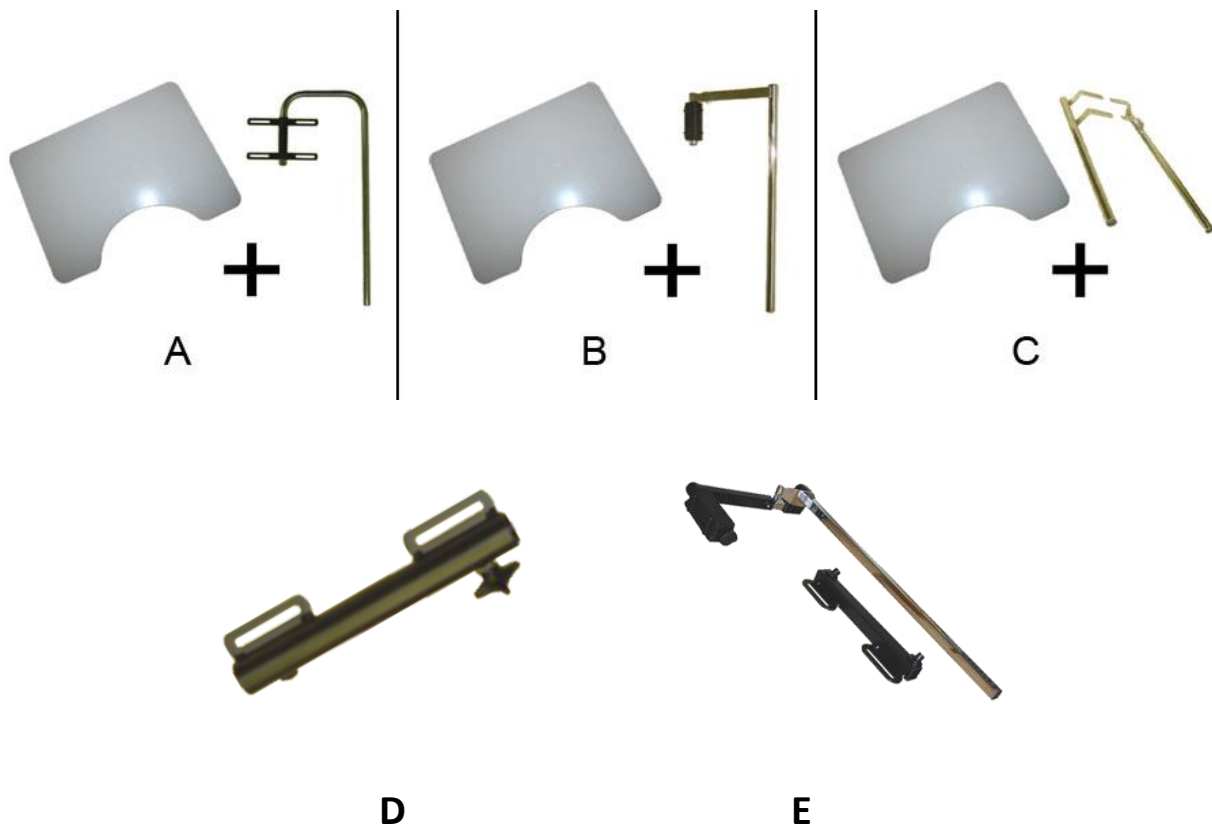
(polycarbonate 6 mm thick, with 3 bended sides 30 mm)

- o 400 x 400 mm
- o 500 x 500 mm
- o 600 x 600 mm



Fixation:

- o None
- o Swing up/away, plastic connecting device, adjustable $\varnothing 22$ mm (Picture B)
- o Swing up/away H-plate $\varnothing 19$ mm (Picture A)
- o Swing up/away H-plate $\varnothing 22$ mm (Picture A)
- o Double tube (left and right), chromed, $\varnothing 22$ mm (Picture C)
- o Universal tray connector for tube $\varnothing 22$ mm (Picture D)
- o Fixation for college tray, including connector (Picture E)



**Design printed on the downside of the table,
protected with sheet**

- No design printed, transparant (standard table)
- Design nr:..... (number spoke guard, see catalog/website)
- Color nr:..... (number spoke guard, see catalog/website)

Table padding:

- None
- Elbow padding (Picture A)
- Partly padding (Picture B)
- Complete padding (Picture C)



A



B



C

Table, customized dimension

Material table:

- o Acrylate (perspex / plexiglass) 8 mm thick
- o Acrylate (perspex / plexiglass) 10 mm thick
- o Polycarbonate (makrolon-lexan) 4 mm thick (unbreakable)
- o Polycarbonate (makrolon-lexan) 5 mm thick (unbreakable)
- o Polycarbonate (makrolon-lexan) 6 mm thick (unbreakable)
- o Polycarbonate (makrolon-lexan) 8 mm thick (unbreakable)
- o Polycarbonate (makrolon-lexan) 10 mm thick (unbreakable)

Raise (bended) sides:

(Only available in polycarbonate (makrolon-lexan) 4, 5 and 6 mm thick)

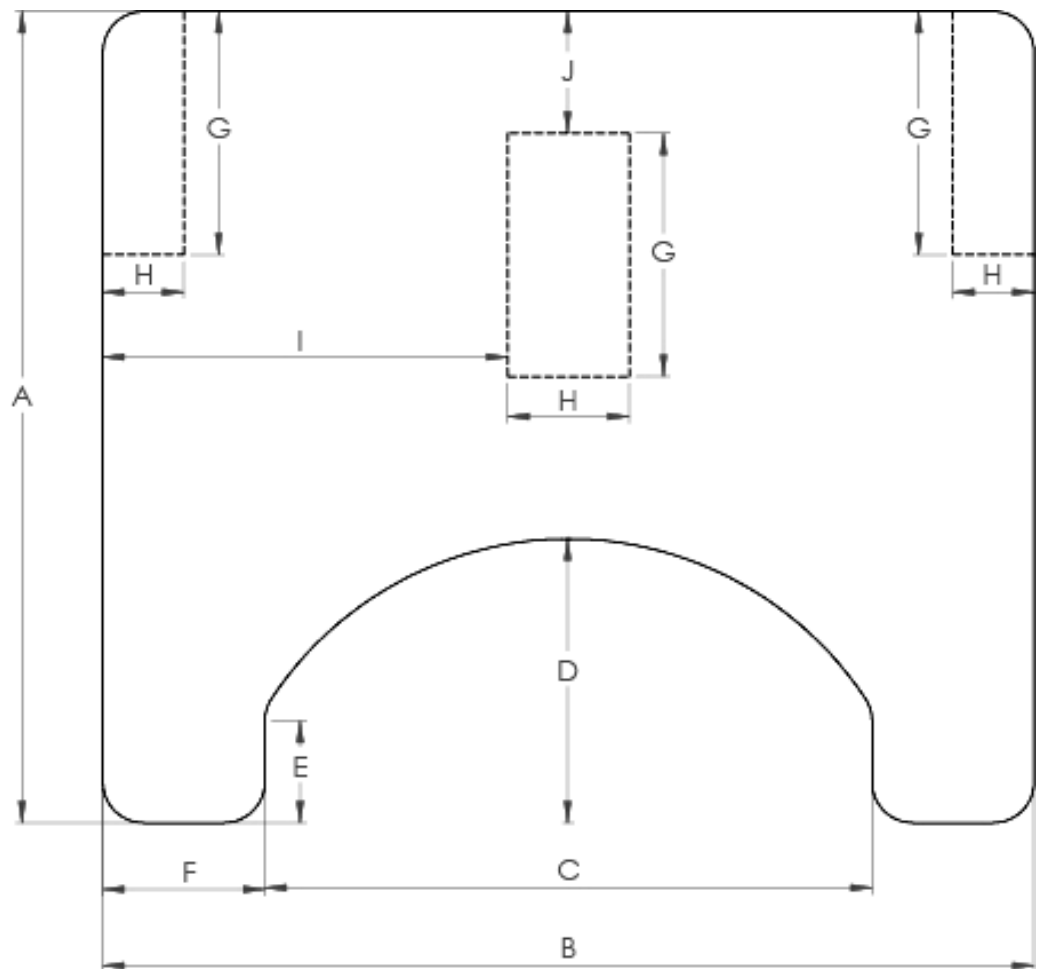
- o None
- o 30 mm bended sides until the cutout for the belly (Picture A)
- o 30 mm bended sides completely along the table (Picture B)
- o Otherwise:



Control panel cutout:

- o None (A-F)
- o Control panel on left side (A-H)
- o Control panel on right side (A-H)
- o Control panel in middle (A-J)

- A: _____ cm
- B: _____ cm
- C: _____ cm
- D: _____ cm
- E: _____ cm
- F: _____ cm
- G: _____ cm
- H: _____ cm
- I: _____ cm
- J: _____ cm



Remarks: